



**Now Hiring**  
**Senior Quantity Surveyor**

[mclarke.co.uk](https://mclarke.co.uk)



# Contents

Celebrating 25 Years	3
Capabilities	4
Senior Quantity Surveyor	6
Training & Onboarding	10
Benefits of Working at Clarke	11
The Clarke Way	12
Testimonials	14
Life at Clarke	16



Company Chairman Michael Clarke with son Eugene Clarke, Managing Director.

## Celebrating 25 Years

Engaging at the earliest stage of a project, we act as a central hub for clients offering the complete end-to-end facade service from pre-construction to project handover. By overseeing the process from start to finish, we guarantee safety, innovation and take sole responsibility in delivering remarkable buildings.

Established in 1996, Clarke celebrate 25 years in business. Employing 90 plus direct employees across pre-construction, design, structural engineering, fabrication, operations and management with 180 installers, Clarke is driven by the passion of its people.

In 2022, we are moving to a state of the art facility to house our fabrication and office teams under one roof. Our newly invigorated fabrication facility is fully operational with advanced offsite machinery and equipment.



**25 years in business**



**Family owned and run**



**In-house design and engineering experts**



**Full offsite capability**



**Purpose led company**



**Quality and process driven**



# Capabilities

Determined to engage at the earliest stage of a project, we act as a central hub for clients offering a complete end-to-end facade service from pre-construction to project handover. By overseeing the process from start to finish, we guarantee innovation, safety and take sole responsibility in delivering remarkable buildings. At Clarke we have highly skilled personnel across all divisions who are passionate about what they do and who bring a wealth of knowledge to the team.

- Pre-Construction
- PCSA
- Design
- Structural Engineering
- Offsite Fabrication
- Re: Purpose

External Envelope



Unitised Facade



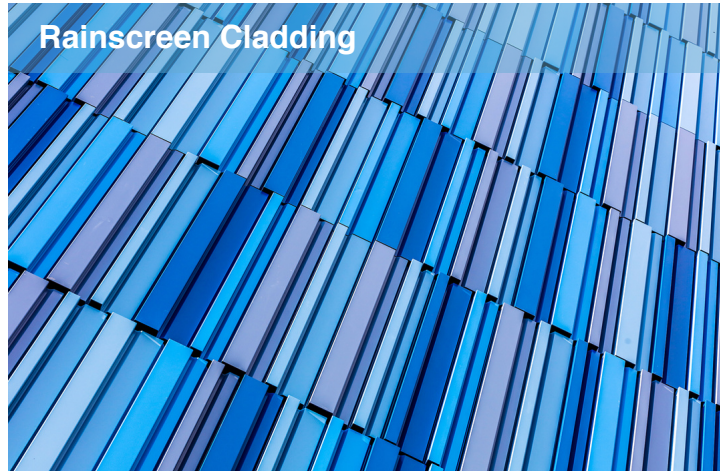
Glazing



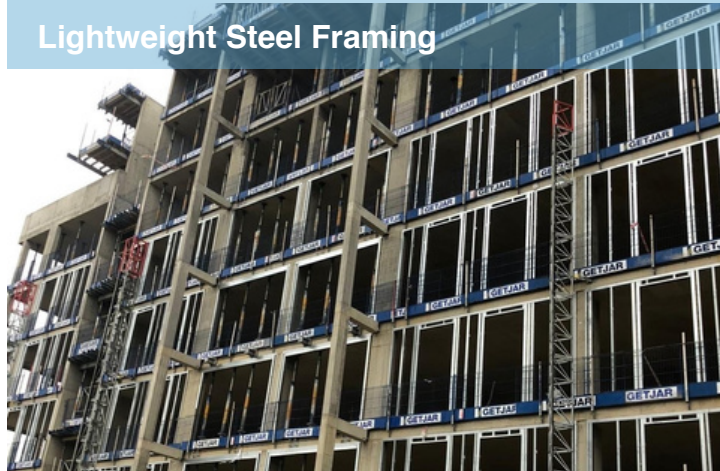
Bespoke Offsite Architectural Services



Rainscreen Cladding



Lightweight Steel Framing





# Senior Quantity Surveyor

Clarke are a growing construction business based in Ballymena with a portfolio of work that reaches all over the UK and Ireland.

Our people are our priority, they make us stand out, we are extremely proud of them and what we have achieved.

This is an exciting role in a fast-paced environment that will provide a structured working platform for an experienced Senior Quantity Surveyor. The role will be integral with our Operations Team and Site in a post-contract role to manage both project profitability and construction programmes on each live project. This role will be based in our Head Office in Ballymena with regular travel to the UK 1-2 days per month.

## Role Summary

- Coaching and mentoring Intermediate/Junior QS members.
- Lead commercial management aspect of a number of projects ranging from £1m-£15m.
- Engagement, negotiation, appointment and management of sub-contractors from tender to final account.
- Procurement of materials and ensuring efficient & timely scheduling/buying.
- Produce Commercial Risk and Opportunity Register
- Review costs/specification of alternative materials in ROR with Designer to identify if feasible to possibly change.
- Ensure the Design Material Schedule (DMS) is updated accurately & in a timely manner
- Analysing received tenders and assessing value for money.
- Exercising financial control through the production of updated cash-flows and assisting the compilation of cost value reconciliation reports.
- Payment of sub-contractors
- Submitting & agreeing final accounts for project
- Monitoring budget vs current/forecast spend and ensuring any risk items are raised and addressed in an efficient, timely manner.
- Submission of applications for payment and agreement of interim valuations.
- Change management & identification/agreement of variations.
- On-site measurement of works
- Understand the implications of health and safety regulations.
- Successfully co-ordinate as part of the management team through liaison with clients / client representatives, architects, consultant engineers, site managers, supervisors, planners, surveyors and HSEQ officers

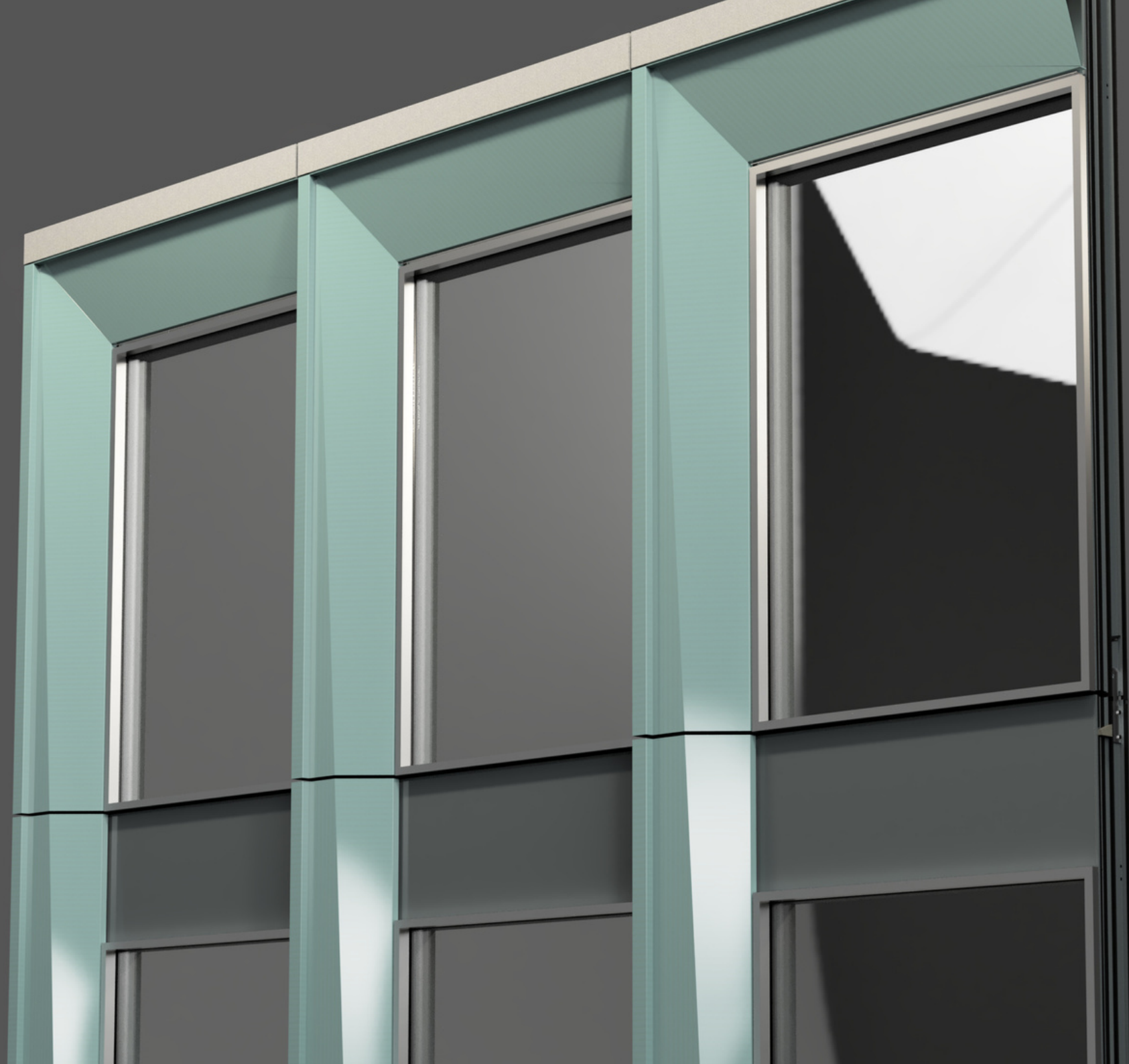
## Candidate Requirements

- BSc Hons in Quantity Surveying and Commercial Management or similar diploma.
- Minimum 3-5 years’ experience in the above roles or similar setting.
- Sound knowledge of general construction methods.
- Sound communication, numerical and literacy skills.
- High level of IT literacy, especially in Microsoft Packages (Word, Excel, PowerPoint and Outlook).
- CSR training card.
- Flexibility to travel to the UK approximately 1-2 days per month.
- Proficient in negotiation & achieving best value from supply chain.
- High standard of organisational and time management skills.
- Ability to demonstrate previous experience in liaising with Tier 1 Contractors in a sub-contract capacity.
- Commitment to team approach and support, initiative taker, problem solver and excellent client relations are a must.

## Desirable Criteria

- Technical knowledge/experience of Unitised Curtain Wall system
- Technical knowledge of SFS, Rainscreen Cladding & Glazing systems (Metal Technology, Aluprof, Schueco).
- Contractual training NEC, JCT etc
- Construction background





### Competencies

- Innovation – the ability to introduce innovations to enhance or adds efficiencies to the project or task
- Solution Focused - problem solving, finding solutions that commit to the best outcome
- Influence - the ability to build excellent team relationships that influences great outcomes
- Self-Direction/Accountability – the ability to take ownership, set goals, follow through, seek feedback and ask for support in order to achieve results.
- Technical Expertise – developing your expertise and skills base on a regular basis and often ahead of time for future needs.

### Remuneration

- Attractive level of remuneration depending on expertise and experience
- Health cash plan
- Private health care
- Pension
- Discounted gym membership
- Opportunities for career development

Visit our website to understand our business, our people and culture, and if you'd like to apply for this position please forward your CV to us by 12 noon, Thursday 16th March 2023.

We are an equal opportunities employer, and led by our values (creative, brave, determined, collaborative, passionate, true).  
Diversity and Inclusion is at the heart of our business



# Training & Onboarding

Looking for somewhere to unleash your potential? You've found it!

Working alongside talented, diverse and passionate people, you will make your mark in construction through conscience, innovation and a determination to make a difference.

Our diverse, multi-skilled team work seamlessly in tandem to deliver project excellence from tender to completion. Our clients are guaranteed to work with the very best talent in the field, whose attention to detail, creativity, reliability and professionalism is second to none. We are incredibly proud of what our people have achieved, their growth and ambition are reflected in our success to date.

We've compiled a list of our typical onboarding and job-specific training:

## Onboarding

- Vision, Values & Purpose
- Business Strategy
- The Clarke Way
- Objectives and Key Results
- Meet the Team
- Departmental Overviews
- Leadership Training
- Viewpoint
- Document Control
- Company Policies & Procedures
- Planning and Time Management

# Benefits of working at Clarke

- Opportunities for career development
- Family culture
- Annual bonus
- Comprehensive training
- Company pension
- Award-winning company
- Long term career progression
- Attractive level of remuneration depending on expertise and experience
- State of the art facilities and amenities including free parking and on-site gym
- Westfield Health Cash Plan (Dental, optical, physio etc)
- Private health care
- Length of service awards

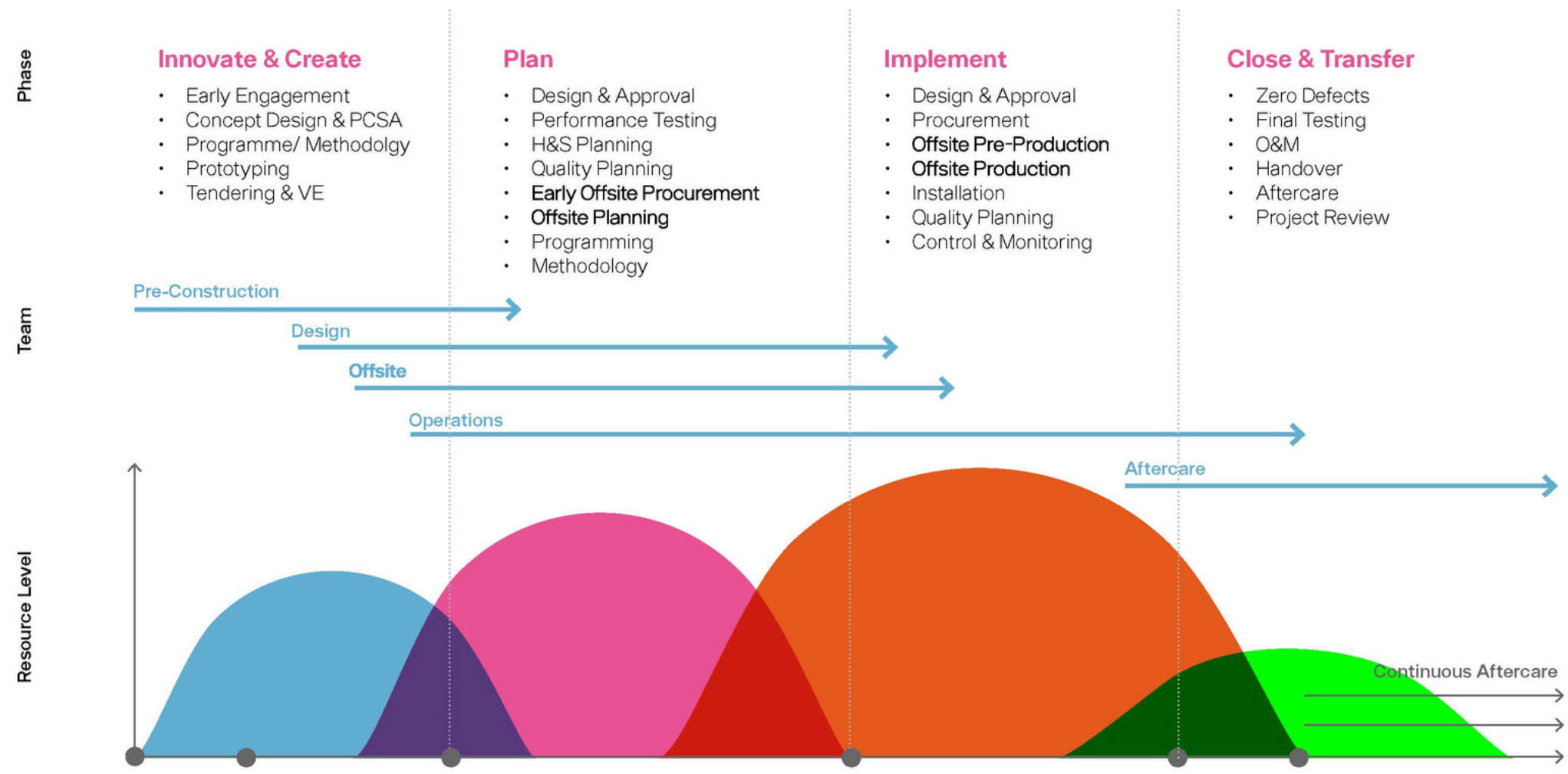
**INVESTORS IN PEOPLE®**  
We invest in people Silver

**Right Place to Work Award 2021**  
Ballymena Business Awards



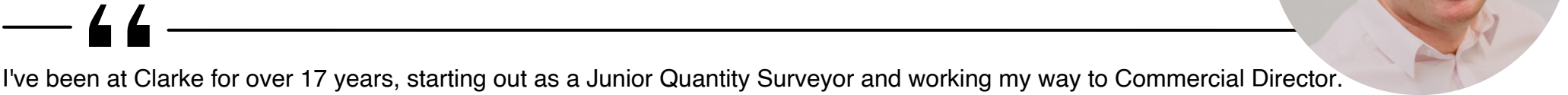


# The Clarke Way



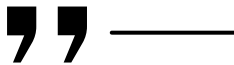


# #TeamClarke



I've been at Clarke for over 17 years, starting out as a Junior Quantity Surveyor and working my way to Commercial Director. Being part of the Operations team gives me a good balance of site and office, I meet a range of people. My role as Commercial Director gives me the opportunity to get involved in all aspects of the business, with a focus on the growth and commercial direction of Clarke - it's been great to experience first-hand how far Clarke has come since I first joined the team.

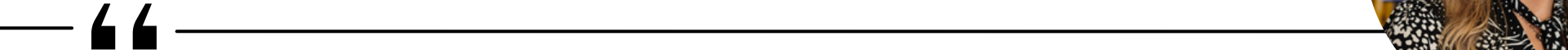
**Laurence Rocks**  
Commercial Director



Bath Court | Birmingham

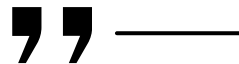


Longwater Avenue | Reading



I initially joined Clarke as a Receptionist, however since joining the team last year I have now progressed into Health and Safety. At present, I am completing my NEBOSH through Clarke and continue to train and develop within the department. I am thankful that the team at Clarke encouraged me to take the next steps and pursue this new role. Clarke is a great place to work, they put their people at the core of the business and always eager to support development within the business.

**Clodhna Devlin**  
Health & Safety Advisor





# Life at Clarke







# CLARKE

## Get in contact!

t: +44 (0)28 2582 2500

e: [careers@mclarke.co.uk](mailto:careers@mclarke.co.uk)

w: [www.mclarke.co.uk](http://www.mclarke.co.uk)

