



Now Hiring **HSEQ Manager**

mclarke.co.uk

Contents

Celebrating 25 Years	3
Capabilities	4
HSEQ Manager	6
Training & Onboarding	8
Benefits of Working at Clarke	9
The Clarke Way	11
Testimonials	12
Life at Clarke	14



Company Chairman Michael Clarke with son Eugene Clarke, Managing Director.

Celebrating 25 Years

Engaging at the earliest stage of a project, we act as a central hub for clients offering the complete end-to-end facade service from pre-construction to project handover. By overseeing the process from start to finish, we guarantee safety, innovation and take sole responsibility in delivering remarkable buildings.

Established in 1996, Clarke celebrate 25 years in business. Employing 90 plus direct employees across pre-construction, design, structural engineering, fabrication, operations and management with 180 installers, Clarke is driven by the passion of its people.

In 2022, we are moving to a state of the art facility to house our fabrication and office teams under one roof. Our newly invigorated fabrication facility is fully operational with advanced offsite machinery and equipment.



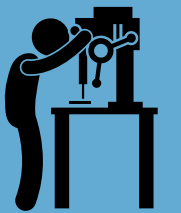
25 years in business



Family owned and run



In-house design and engineering experts



Full offsite capability



Purpose led company



Quality and process driven

Capabilities

Determined to engage at the earliest stage of a project, we act as a central hub for clients offering a complete end-to-end facade service from pre-construction to project handover. By overseeing the process from start to finish, we guarantee innovation, safety and take sole responsibility in delivering remarkable buildings. At Clarke we have highly skilled personnel across all divisions who are passionate about what they do and who bring a wealth of knowledge to the team.

- Pre-Construction
- PCSA
- Design
- Structural Engineering
- Offsite Fabrication
- Re: Purpose

External Envelope



Unitised Facade



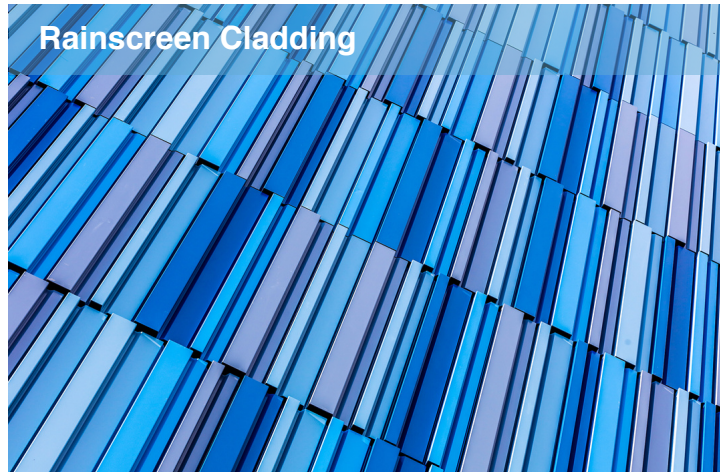
Glazing



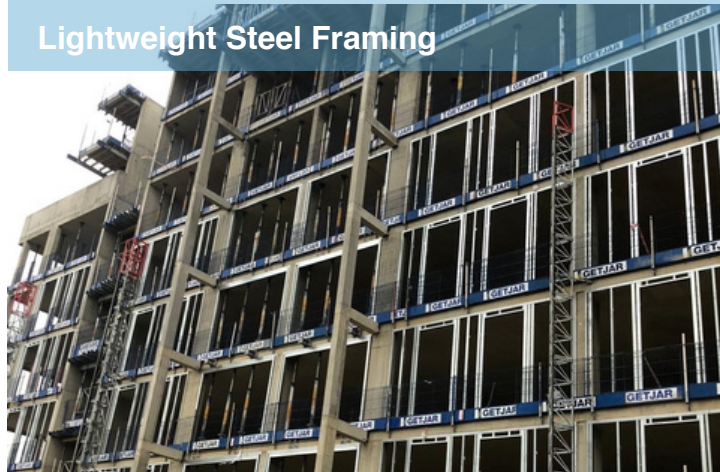
Bespoke Offsite Architectural Services



Rainscreen Cladding



Lightweight Steel Framing



HSEQ Manager

We now have an exciting opportunity for an experienced HSEQ Manager to join our business.

Health and Safety is a vital component of our business. This is an exciting role within our HSEQ team which will assist Site and Factory Management in achieving their health, safety, environmental, and quality aims to ensure they remain legislatively compliant and adhere to the principles of our HSEQ management system.

This role is based in our Head Office in Ballymena but will require travel to the UK.

Role Summary

The successful candidate will work across a range of live project sites – our projects are varied and diverse and range from £2m - £16m in the commercial, retail, and public sector. As an HSEQ Manager, you are required to fulfill the below duties:

- Provide a business partnering approach to the management of HSEQ across the organisation - providing advice, guidance, support and coaching to managers and other colleagues.
- Work with operational project teams to ensure health and safety is a primary consideration at all stages of the project lifecycle including the development and oversight of RAMS for complex works on live sites with a specific focus on high-rise projects.
- Act as the Champion for HSEQ and oversee the development of a supportive and informed culture.
- Manage, devise and maintain Quality and Environmental procedures, processes, standards, and specifications in relation to ISO 9001, ISO 14001 and ISO 45001 with an integrated management system.
- Conduct audits as required (planned and investigative) identifying areas of non-compliance and promoting rectification actions.
- Responsible for the supervision and coordination of work systems to ensure that the business meets the highest quality and environmental standards.
- Conduct site inspections.
- Conduct accident investigations, and assist with any RIDDOR requirements.
- Excellent communication and engagement skills at all levels of business.

Essential Criteria

You will have previous experience working in a similar role within a construction environment and will demonstrate a working knowledge of HSEQ standards and audit procedures with sound experience in creating, understanding, and implementing integrated ISOs throughout a live project.

- NEBOSH Level 3 Certificate Health and Safety Management for Construction.
- Minimum 3-5 years proven HSE experience within construction / fabrication / installation.
- Hold Appointed Person (Lifting Operations) Card, or be willing to obtain.
- Accident and incident investigation experience.
- Experience of undertaking health and safety audits.
- Experience of creating RAMS for complex works.
- Excellent IT Skills, in particular Excel.
- Full driving license.

Desirable Criteria

- IOSH Membership and ISO Knowledge are highly desirable.

Competencies

- Innovation – the ability to introduce innovations to enhance or adds efficiencies to the project or task.
- Solution Focused - problem-solving, finding solutions that commit to the best outcome.
- Influence - the ability to build excellent team relationships that influence great outcomes.
- Self-Direction/Accountability – the ability to take ownership, set goals, follow through, seek feedback and ask for support in order to achieve results.
- Technical Expertise – developing your expertise and skills based on a regular basis and often ahead of time for future needs.

Visit our website to understand our business, our people, and our culture. If you would like to apply for this position please forward your CV to us by 12 noon, Friday 29 July 2022, outlining clearly how you meet the defined essential and where applicable, desirable criteria. We are an equal opportunities employer and are led by our values (creative, brave, determined, collaborative, passionate, true). Diversity and Inclusion are at the heart of our business.

Training & Onboarding

Looking for somewhere to unleash your potential? You've found it!

Working alongside talented, diverse and passionate people, you will make your mark in construction through conscience, innovation and a determination to make a difference.

Our diverse, multi-skilled team work seamlessly in tandem to deliver project excellence from tender to completion. Our clients are guaranteed to work with the very best talent in the field, whose attention to detail, creativity, reliability and professionalism is second to none. We are incredibly proud of what our people have achieved, their growth and ambition are reflected in our success to date.

We've compiled a list of our typical onboarding and job-specific training:

Onboarding

- Vision, Values & Purpose
- Business Strategy
- The Clarke Way
- Objectives and Key Results
- Meet the Team
- Departmental Overviews
- Leadership Training
- Viewpoint
- Document Control
- Company Policies and Procedures
- Planning and Time Management

Benefits of working at Clarke

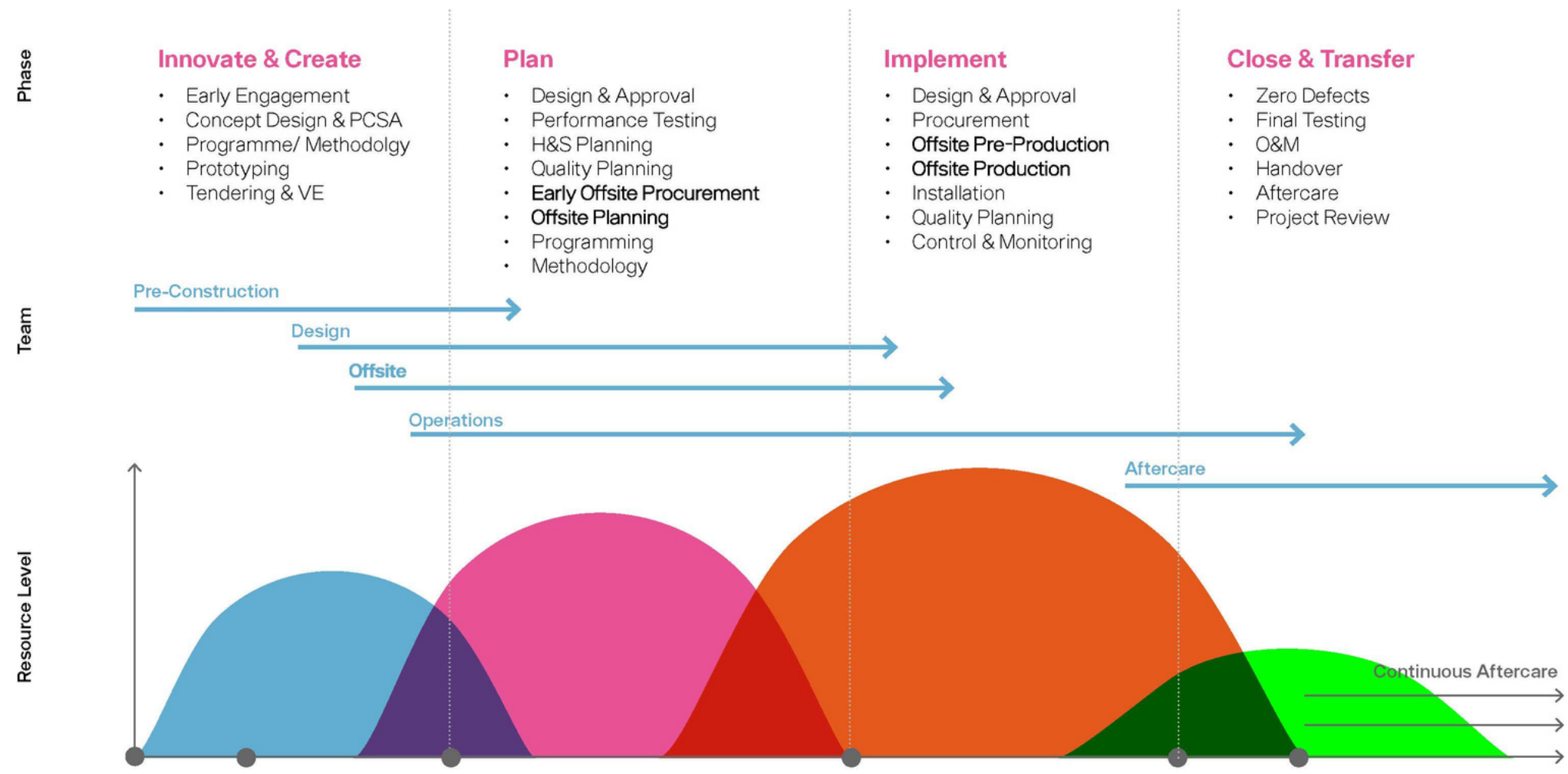
- Opportunities for career development
- Family culture
- Annual bonus
- Comprehensive training
- Company pension
- Award-winning company
- Long term career progression
- Attractive level of remuneration depending on expertise and experience
- State of the art facilities and amenities including free parking and on-site gym
- Westfield Health Cash Plan (Dental, optical, physio etc)
- Private health care
- Length of service awards
- Early finish Fridays, if applicable.

INVESTORS IN PEOPLE®
We invest in people Silver

Right Place to Work Award 2021
Ballymena Business Awards



The Clarke Way



#TeamClarke

“

I've been at Clarke for over 17 years, starting out as a Junior Quantity Surveyor and working my way to Commercial Director. Being part of the Operations team gives me a good balance of site and office, I meet a range of people. My role as Commercial Director gives me the opportunity to get involved in all aspects of the business, with a focus on the growth and commercial direction of Clarke - it's been great to experience first-hand how far Clarke has come since I first joined the team.

Laurence Rocks
Commercial Director

”



“

I initially joined Clarke as a Receptionist, however since joining the team last year I have now progressed into Health and Safety. At present, I am completing my NEBOSH through Clarke and continue to train and develop within the department. I am thankful that the team at Clarke encouraged me to take the next steps and pursue this new role. Clarke is a great place to work, they put their people at the core of the business and always eager to support development within the business.

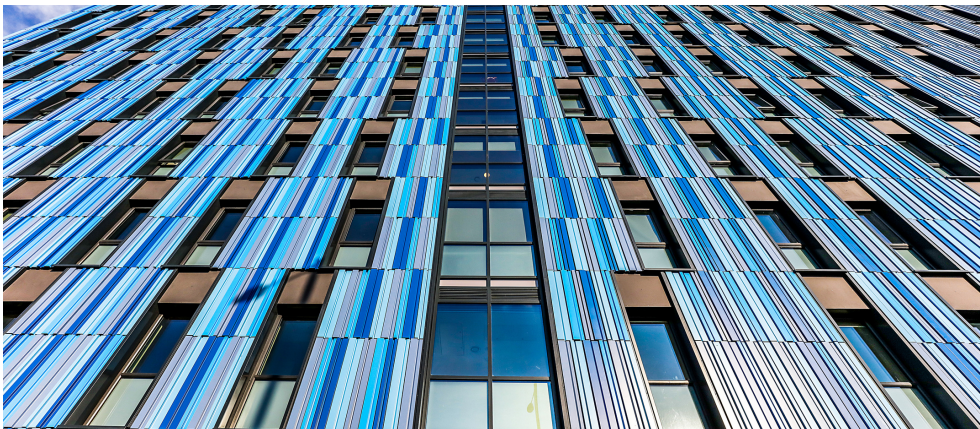
Clodhna Devlin
Health & Safety Advisor

”

Bath Court | Birmingham



Life at Clarke





CLARKE

Get in contact!

t: +44 (0)28 2582 2500

e: careers@mclarke.co.uk

w: www.mclarke.co.uk

