



**We're Hiring**  
**Estimators**

**[mclarke.co.uk](https://mclarke.co.uk)**



# Contents

|                               |    |
|-------------------------------|----|
| Celebrating 25 Years          | 3  |
| Capabilities                  | 4  |
| Estimator                     | 6  |
| Training & Onboarding         | 8  |
| Benefits of Working at Clarke | 9  |
| The Clarke Way                | 11 |
| Testimonials                  | 12 |
| Life at Clarke                | 14 |



Company Chairman Michael Clarke with son Eugene Clarke, Managing Director.

# Celebrating 25 Years

Engaging at the earliest stage of a project, we act as a central hub for clients offering the complete end-to-end facade service from pre-construction to project handover. By overseeing the process from start to finish, we guarantee safety, innovation and take sole responsibility in delivering remarkable buildings.

Established in 1996, Clarke celebrate 25 years in business. Employing 90 plus direct employees across pre-construction, design, structural engineering, fabrication, operations and management with 180 installers, Clarke is driven by the passion of its people.

In 2022, we are moving to a state of the art facility to house our fabrication and office teams under one roof. Our newly invigorated fabrication facility is fully operational with advanced offsite machinery and equipment.



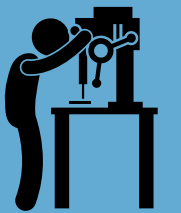
**25 years in business**



**Family owned and run**



**In-house design and engineering experts**



**Full offsite capability**



**Purpose led company**



**Quality and process driven**



# Capabilities

Determined to engage at the earliest stage of a project, we act as a central hub for clients offering a complete end-to-end facade service from pre-construction to project handover. By overseeing the process from start to finish, we guarantee innovation, safety and take sole responsibility in delivering remarkable buildings. At Clarke we have highly skilled personnel across all divisions who are passionate about what they do and who bring a wealth of knowledge to the team.

- Pre-Construction
- PCSA
- Design
- Structural Engineering
- Offsite Fabrication
- Re: Purpose

External Envelope



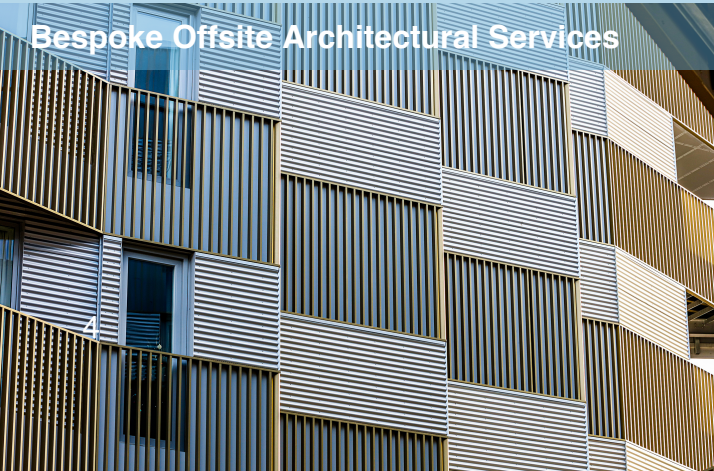
Unitised Facade



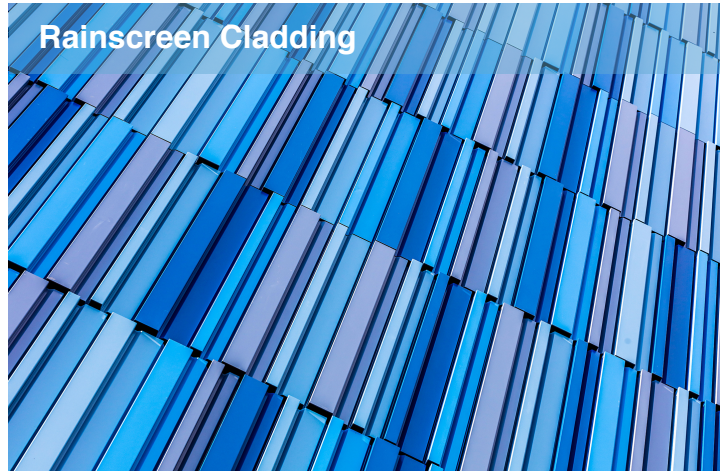
Glazing



Bespoke Offsite Architectural Services



Rainscreen Cladding



Lightweight Steel Framing





# Estimator

Winning jobs through applied industry knowledge, accurate estimation, client team liaison and sticking to deadlines.

Our Estimators are vital to our success, their knowledge of the industry and experience ensure they provide detailed estimates for tenders and jobs taking into account cost, time and client expectations. This role will take full responsibility for accurate tendering proposals for both glazing and cladding projects, working together in a team, sharing knowledge, mentoring trainee estimators, meeting clients and helping us win projects we can be proud of.

This role is based in our Head Office in Ballymena however, it is expected that a reasonable amount of travel throughout Northern Ireland and ROI will be required to attend meetings and review jobs.

## Role Summary

As an Estimator key responsibilities will include:

- Preparing tender submissions, estimates and proposals within project timeframes
- Analysis and estimation of value engineering opportunities to ensure bids are competitive
- Quantity take-off, BOQ preparation and unit rate build-ups
- Preparation, issue, follow up and negotiation of supplier enquiries and quotations
- Completion of tender checklists
- Final bid preparation and submission
- Follow up and negotiation of submitted tenders including attendance at tender review meetings as necessary
- Preparation of project information packs for project handover
- Attendance at internal tender review and project handover meetings
- Take part in our knowledge transfer huddles, mentor others and support the team to continuously innovate and improve
- Build relationships with clients, giving consideration to how we meet and exceed their expectations by taking time to listen, innovate and provide solutions whilst minimising risk for the client and the company
- Work closely with design team to respond creatively to client needs and build operational excellence throughout the company.

## Essential Criteria

- At least 3 years’ construction industry experience
- Proven ability to read and understand construction drawings and specifications
- Sound knowledge of general construction methods
- Excellent client-facing/networking skills
- Sound communication, numerical and literacy skills.
- High standard of organisational and time management skills
- High level of IT literacy, especially in Microsoft Packages (Word, Excel, PowerPoint and Outlook).
- Access to transport throughout N.I and ROI

## Desirable Criteria

- Estimating experience in the Façade industry (cladding and/or glazing)
- Technical knowledge of SFS, Rainscreen Cladding
- Technical knowledge of Glazing systems (Metal Technology, Aluprof, Schueco).
- HNC level qualification or above, preferably in construction or engineering related subject.
- Experience pricing with LogiKal or Schuecal software.
- Experience in pricing unitised facades



# Training & Onboarding

Looking for somewhere to unleash your potential? You've found it!

Working alongside talented, diverse and passionate people, you will make your mark in construction through conscience, innovation and a determination to make a difference.

Our diverse, multi-skilled team work seamlessly in tandem to deliver project excellence from tender to completion. Our clients are guaranteed to work with the very best talent in the field, whose attention to detail, creativity, reliability and professionalism is second to none. We are incredibly proud of what our people have achieved, their growth and ambition are reflected in our success to date.

We've compiled a list of our typical onboarding and job-specific training:

## Onboarding

- Vision, Values & Purpose
- Business Strategy
- The Clarke Way
- Objectives and Key Results
- Meet the Team
- Departmental Overviews
- Leadership Training
- Viewpoint
- Document Control
- Company Policies & Procedures
- Planning and Time Management

# Benefits of working at Clarke

- Opportunities for career development
- Family culture
- Annual bonus
- Comprehensive training
- Company pension
- Award-winning company
- Long term career progression
- Attractive level of remuneration depending on expertise and experience
- State of the art facilities and amenities including free parking and on-site gym
- Westfield Health Cash Plan (Dental, optical, physio etc)
- Private health care
- Length of service awards

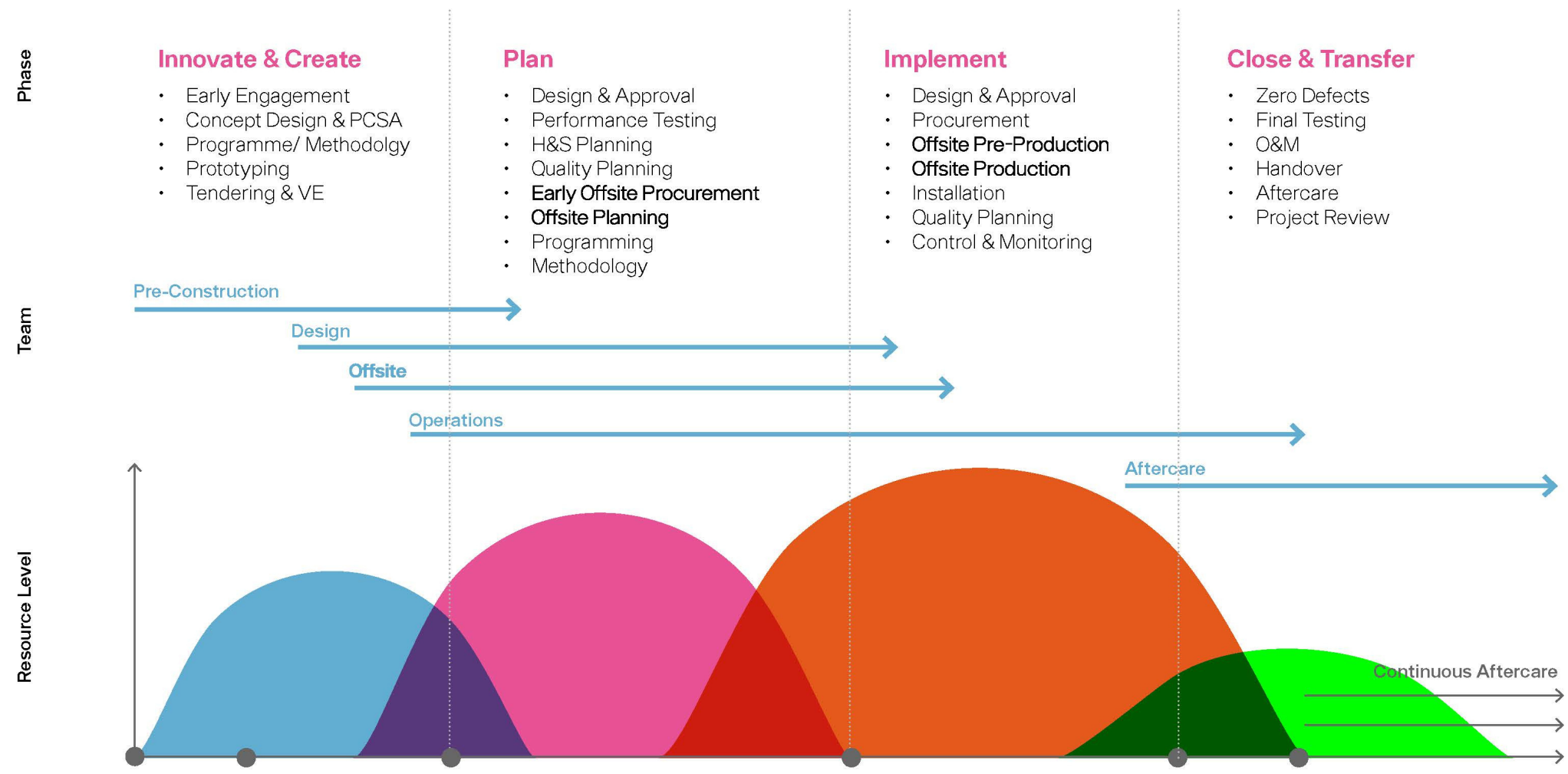
**INVESTORS IN PEOPLE®**  
We invest in people Silver

**Right Place to Work Award 2021**  
Ballymena Business Awards



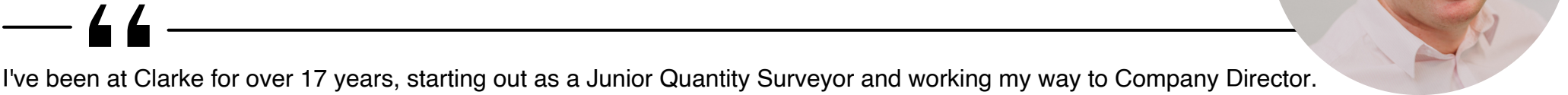


# The Clarke Way



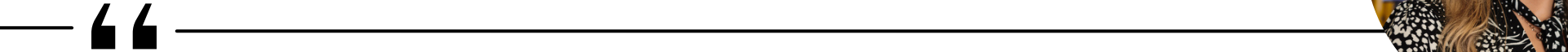
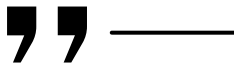


# #TeamClarke



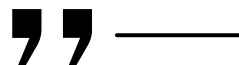
I've been at Clarke for over 17 years, starting out as a Junior Quantity Surveyor and working my way to Company Director. Being part of the Operations team gives me a good balance of site and office, I meet a range of people. My role as Commercial Director gives me the opportunity to get involved in all aspects of the business, with a focus on the growth and commercial direction of Clarke - it's been great to experience first-hand how far Clarke has come since I first joined the team.

**Laurence Rocks**  
Commercial Director



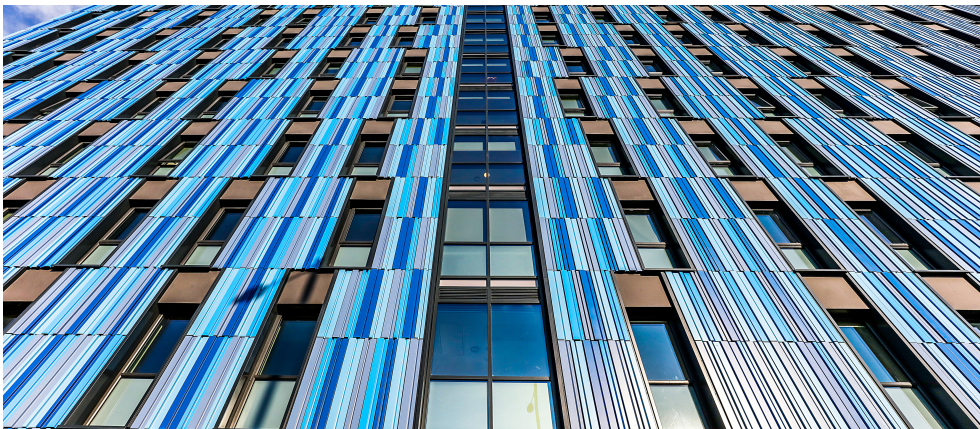
I initially joined Clarke as a Receptionist, however since joining the team last year I have now progressed into Health and Safety. At present, I am completing my NEBOSH through Clarke and continue to train and develop within the department. I am thankful that the team at Clarke encouraged me to take the next steps and pursue this new role. Clarke is a great place to work, they put their people at the core of the business and always eager to support development within the business.

**Clodhna Devlin**  
Health & Safety Advisor





# Life at Clarke







**CLARKE**

## **Get in contact!**

**t:** +44 (0)28 2582 2500

**e:** [careers@mclarke.co.uk](mailto:careers@mclarke.co.uk)

**w:** [www.mclarke.co.uk](http://www.mclarke.co.uk)

